

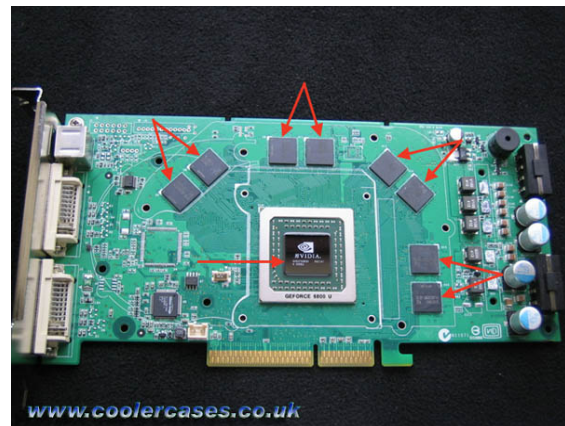


Danger Den NV-68 GFX Block Installation Guide

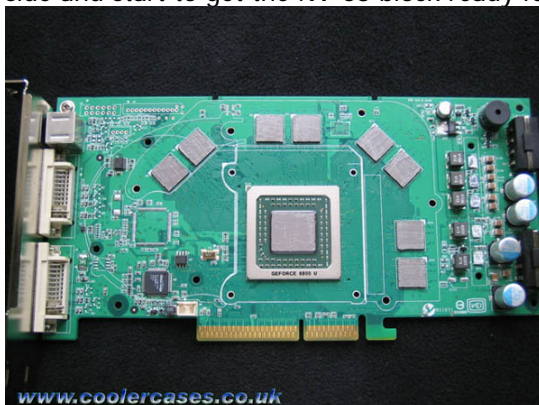
The NV-68 Block is relatively simple to fit but considering you have just invested heavily in both a top of the line Graphics Card and Block it's well worth taking a little time to read the following step by step guide to ensure you get the block fitted correctly first time without any costly mistakes.

All the pictures are click able for better view!

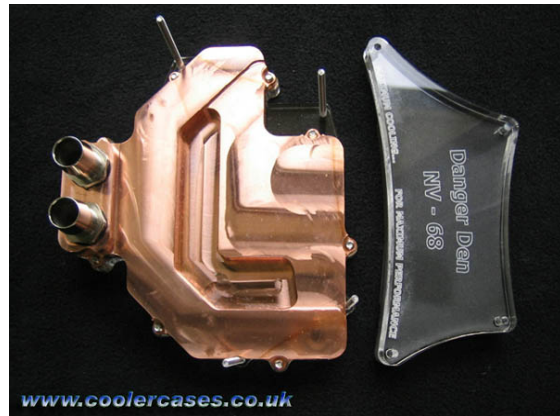
Before you go any further it is recommended you first earth yourself to discharge any built up static electricity from your body by touching a household tap or radiator. Once you have done that you can now continue to remove the stock cooling from your card being very careful not to interfere with any of the resistors or other circuitry and then using something like Loctite 7031 or Akasa Tim Cleaner remove what's left of the stock thermal paste from both the GPU core and the memory which are pointed out by the red arrows in the picture below.



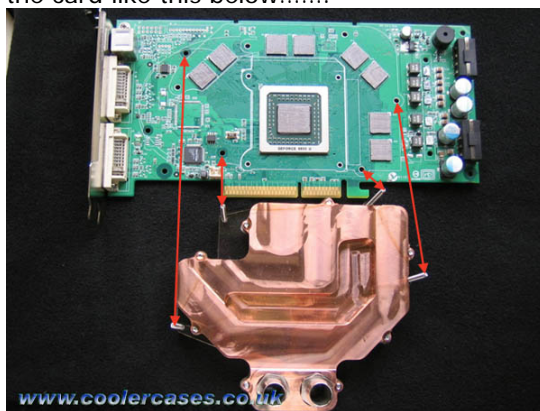
Once you have removed all traces of the thermal paste you can then go ahead and re-apply with a thin layer of Artic Silver which is supplied with the NV-68 Block being sure to remove any that may have accidentally smudged onto the card. Then you can put the card to one side and start to get the NV-68 block ready for fitting.



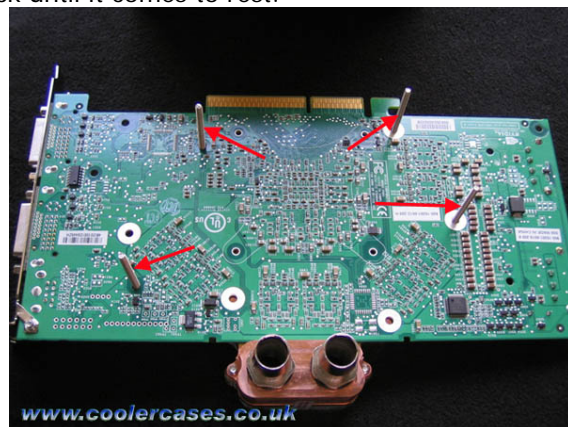
You will first need to remove the top Lucite mounting bracket and foam gasket from the block by un-screwing the 4x brass thumbscrews and removing the springs and nylon washers.



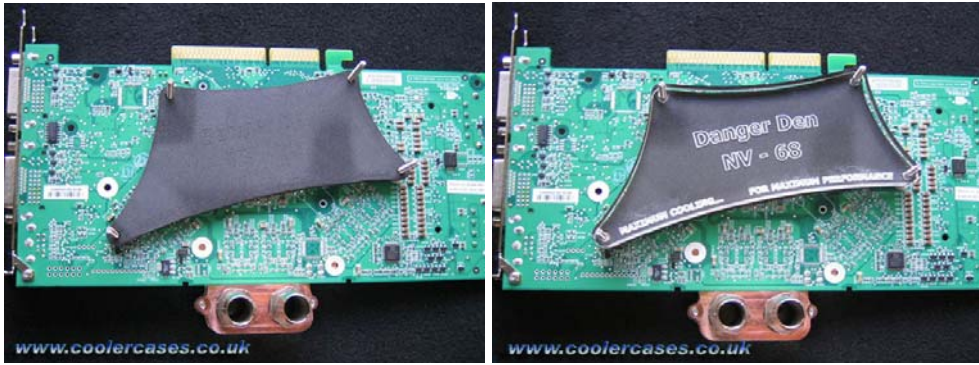
Laying the card on its back with the four protruding threaded bars pointing upwards you can lay the card beside it and line up the four threaded bars to the four corresponding holes in the card like this below.....



Its easier to leave the block on the bench at this stage and lower the card into place making sure you don't catch any of the electrical components with the threaded bars while locating the holes in the card. You will find the card will slide down the threaded bars quite easily but make sure you keep the card flush to the block until it comes to rest.

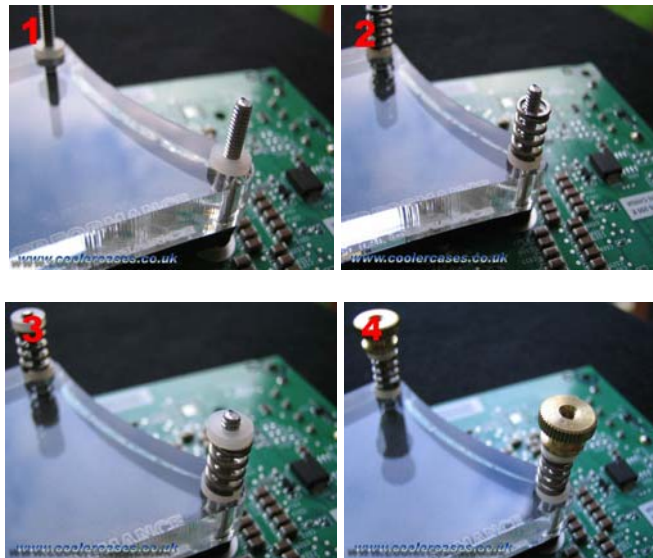


You can now start to re-assemble the top mounting bracket by first adding the foam gasket over the four threaded bars.....followed by the Lucite top



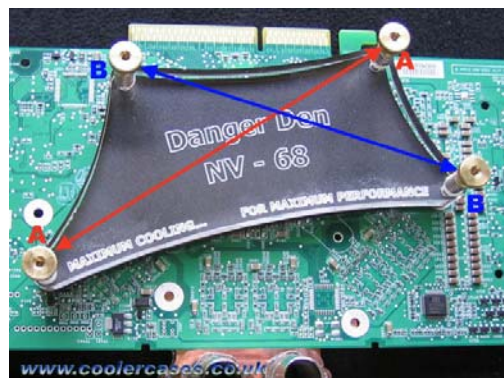
Now it's a simple matter of adding first a nylon washer to each bar followed by a spring and then another nylon washer and finally the brass thumbscrew but don't be tempted to tighten at this stage.

1.....2.....3.....4 below



Once you have all the washers, springs and thumb screws in place you can now start to tighten the mounting bracket down by tightening two opposite corners (A & A) one full turn at a time followed by the same with the other opposite corners (B & B) until a firm and even pressure is applied and the block is secure.

Note: DO NOT over tighten the thumbscrews.....the springs should never be totally compressed as this could result in permanent damage to the GPU core and memory.



You are now ready to add some hose and link it up to your system and enjoy maximum cooling while playing your favourite games☺

